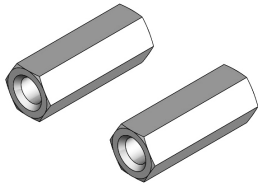


Starter Terminal Adapter



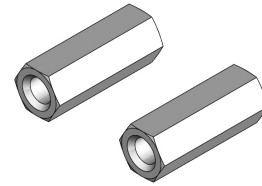
For ease of connecting tester lead clamps to the starter motor.

Thread Size: M12 X 1.75

Warning: Be careful not to short the positive starter connection to ground.

2650-1911-77

Starter Terminal Adapter



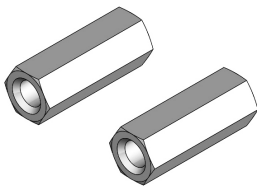
For ease of connecting tester lead clamps to the starter motor.

Thread Size: M12 X 1.75

Warning: Be careful not to short the positive starter connection to ground.

2650-1911-77

Starter Terminal Adapter



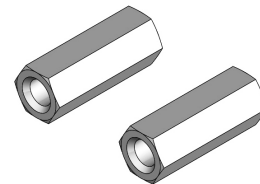
For ease of connecting tester lead clamps to the starter motor.

Thread Size: M12 X 1.75

Warning: Be careful not to short the positive starter connection to ground.

2650-1911-77

Starter Terminal Adapter



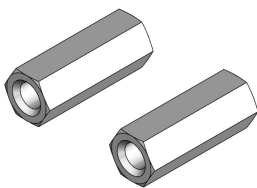
For ease of connecting tester lead clamps to the starter motor.

Thread Size: M12 X 1.75

Warning: Be careful not to short the positive starter connection to ground.

2650-1911-77

Starter Terminal Adapter



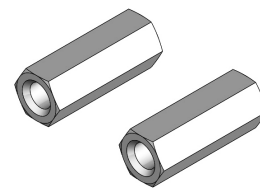
For ease of connecting tester lead clamps to the starter motor.

Thread Size: M12 X 1.75

Warning: Be careful not to short the positive starter connection to ground.

2650-1911-77

Starter Terminal Adapter



For ease of connecting tester lead clamps to the starter motor.

Thread Size: M12 X 1.75

Warning: Be careful not to short the positive starter connection to ground.

2650-1911-77