

# RunManager Quick Start Guide



## Introduction

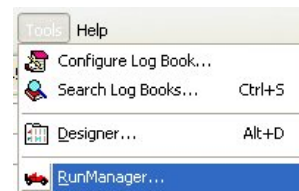
The RunManager application provides the user with the ability to move, copy, delete, backup and restore all DataPro data and DataPro settings on your computer. With its easy-to-use Windows Explorer™ style interface, it makes Run data management simple!

*Please see the Software Installation and Set-up Guide for information on how to install and set-up the software!*

## Getting Started



Click the **RunManager** icon on the Desktop OR select the **RunManager** option from the **Tools** menu within DataPro.



## Graphical User Interface Overview

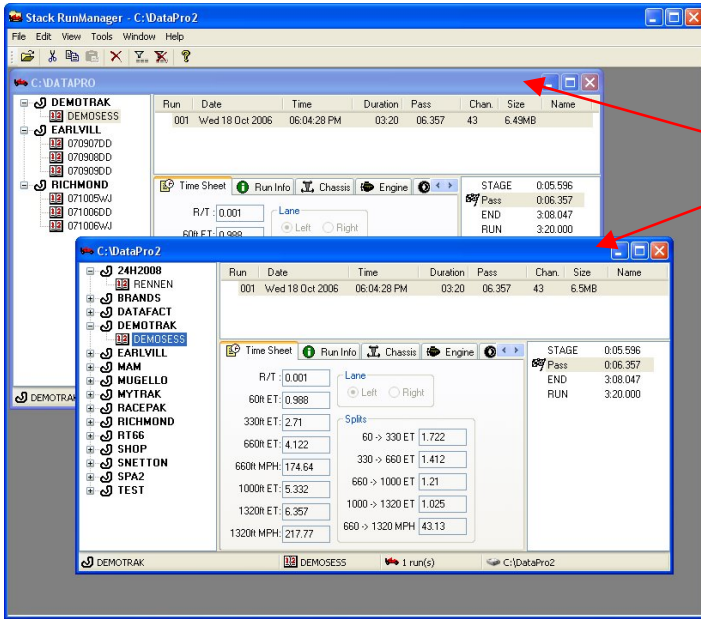
The RunManager application consists of a Multi-Document Interface (MDI) which allows any number of **Data Folders** to be opened in a window at the same time. The Data Folder windows themselves may be maximized, minimized, tiled or cascaded as is standard with Windows applications.

When the application starts up, the Data Folder that DataPro application is currently using is opened in a window. The path for the default Data Folder is **C:\DATAPRO**. Data Folders may be local or on a network.

### Opening a Data Folder window



Click the open icon or select **Open** from the **File** menu.



Data windows can either show the same or different Data Folders.

**Tip:** You may have more than one window open with the same Data Folder.

## Data Folder Window Panes

Currently selected **Data Folder**

Tree view lists all **Tracks** and **Sessions** in this **Data Folder**.

Each **Data Folder** window has four panes that may be resized by dragging the separating splitter bars.

Lists all **Runs** in currently highlighted **Session**.

Shows Log Book entry for currently highlighted **Run**.

List of times for various parts of the **Run**.

Size of data in currently highlighted **Session**.

Status bar – **Track, Session** and **Run Number** of currently highlighted **Run**.

Currently selected **Data Folder**.

Run	Date	Time	Duration	Pass	Chan.	Size	Name
001	Wed 18 Oct 2006	06:04:28 PM	03:20	06.357	43	6.5MB	

STAGE	Time
Pass	0:05.596
END	0:06.357
RUN	3:20.000

Split	Time
60 -> 330 ET	1.722
330 -> 660 ET	1.412
660 -> 1000 ET	1.21
1000 -> 1320 ET	1.025
660 -> 1320 MPH	43.13

Stack Run Manager - [C:\DataPro2]

File Edit View Tools Window Help

BRANDS  
DATAFACT  
DEMOTRAK  
DEMOSESS  
EARLVILL  
MAM  
MUGELLO  
MYTRAK  
RACEPAK  
RICHMOND  
SHOP  
SNETTON  
SPA2  
TEST

Time Sheet Run Info Chassis Engine

R/T : 0.001  
60ft ET: 0.988  
330ft ET: 2.71  
660ft ET: 4.122  
660ft MPH: 174.64  
1000ft ET: 5.332  
1320ft ET: 6.357  
1320ft MPH: 217.77

Lane  
 Left  Right

Splits

DEMOTRAK DEMOSESS 1 run(s) C:\DataPro2 6.5MB

## Deleting a Run

To delete a Run for any reason (perhaps a Run was downloaded as a system test):-

1. Open the Track folder and select the Session that contains the Run(s) you want to delete.

2. Highlight the Run(s) you want to delete.

3. Either right-click the highlighted item and select **Delete** from the context menu OR click the delete icon on the toolbar.

## Move Options

If this option is checked, the **Runs** in the moved-to **Session** will be re-ordered chronologically.

Uncheck this option if you do not want to be prompted before moves are made.

## Moving a Run

To move a Run (perhaps you had the wrong Session and/or Track selected when it was downloaded):-

1. Open the Track folder and select the Session that contains the Run(s) you want to move.

2. Highlight the Run(s) you want to move.

3. Left-click and drag the Run(s) across to a different Session.

**Tip:** If the Session you want to move the Run(s) to is not visible because the Track Folder is still collapsed within the tree view, then hover the mouse pointer over the Track to automatically expand it. Or if the Session you want to move the Run(s) to is not visible because the Session Folder is scrolled off the tree view, then hover the mouse pointer over last/first Track in the list to automatically scroll.

### Copying a Run

To copy a Run (perhaps to copy to a network Data Folder):-

1. Open the Track folder and select the Session that contains the Run(s) you want to copy.

2. Highlight the Run(s) you want to copy.

3. Left-click and drag the Run(s) across to a different Session while holding down the **Ctrl** key.

Run	Date	Time	Duration	Pass	Chan.	Size	Name
001	Wed 18 Oct 2006	06:04:28 PM	03:20	06.357	43	6.5MB	
080124JT	Wed 18 Oct 2006	06:04:28 PM	03:20	06.357	43	6.5MB	
080521							

### Deleting a Session or Track

1. Highlight the **Track** or **Session** you want to delete.

2. Either right-click the highlighted item and select **Delete** from the context menu OR click the delete icon on the toolbar.

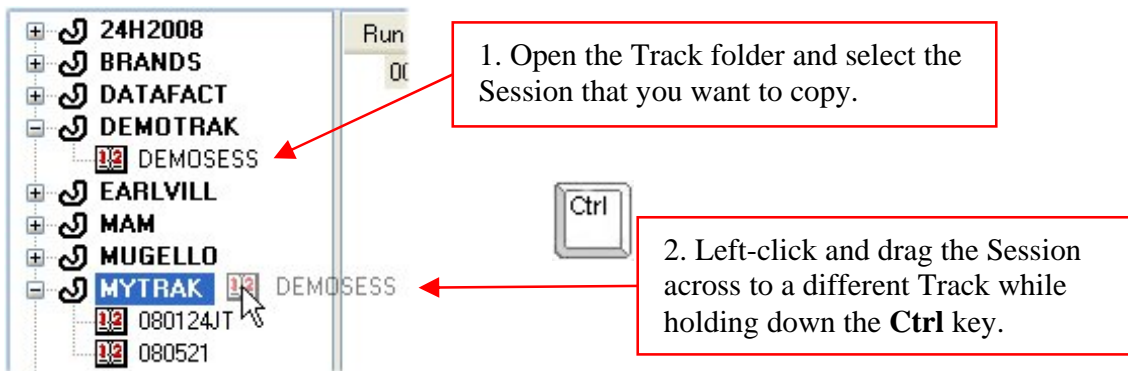
### Moving a Session

1. Open the Track folder and select the Session that you want to move.

2. Left-click and drag the Session across to a different Track.

## Copying a Session

To copy a Session (to another Data Folder, perhaps on a network):-

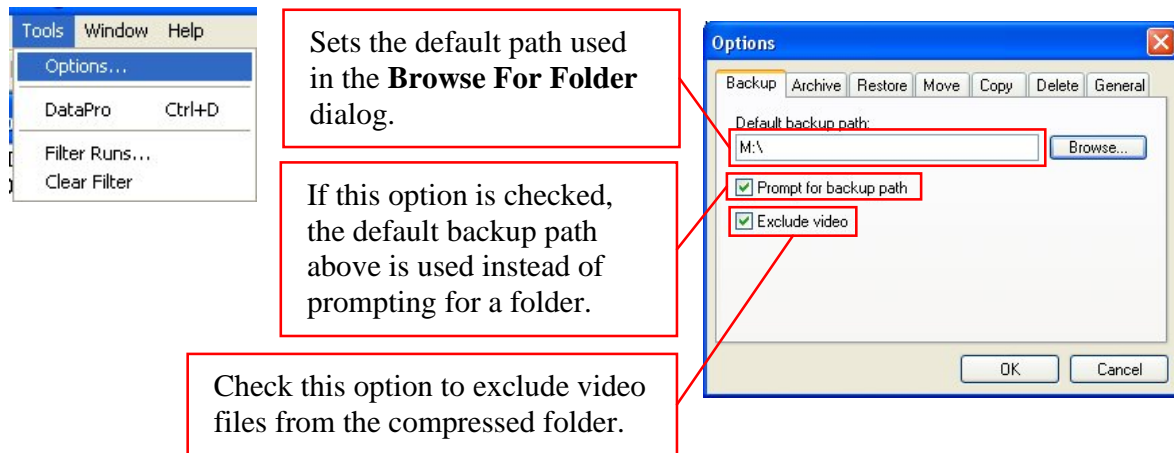


**Tip:** For all copy, cut and paste operations you may either use drag-and-drop, the toolbar shortcuts or the right-click context menu.

## Data Backup

Data Backup involves the copying of selected data to a compressed folder on another drive (usually removable media).

### Backup Options





## Backing up Selected Runs in a Session

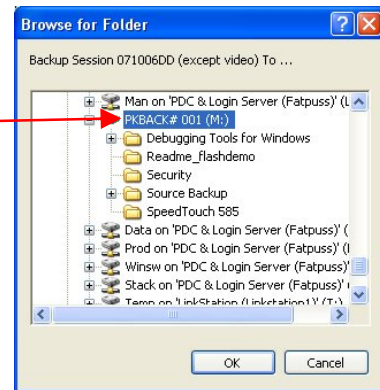
Run	Date	Time	Duration	Pass	Chan.	Size	Name
001	Fri 14 Sep 2007	11:14:00 AM	00:47	08.893	10	246KB	
002	Fri 14 Sep 2007	01:45:00 PM	00:28	08.926	10	150KB	
003	Fri 14 Sep 2007	04:24:00 PM	00:38	08.875	12	321KB	
004	Sat 15 Sep 2007	11:45:00 AM	00:34	08.934	10	100KB	
005	Thu 27 Sep 2007	01:19:00 PM					
006	Thu 27 Sep 2007	04:09:00 PM					
007	Fri 05 Oct 2007	11:55:00 AM					
008	Fri 05 Oct 2007	02:06:00 PM					

1. Select the Run(s) you want to backup in the right-hand Run list pane. For multiple selection, hold the **Ctrl** key down while left-clicking the items in the list.

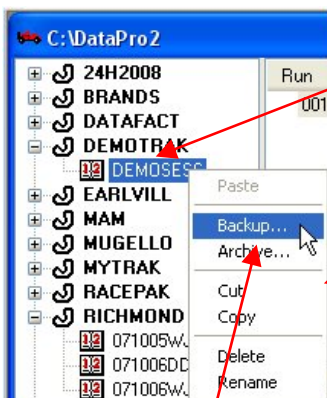
2. Right-click any of the selected items in the list to display the context menu.

3. Choose the **Backup Session (Selected Runs Only)** option from the context menu.

4. Select the location, from the **Browse For Folder** dialog, where you would like the compressed folder to be stored.



## Backing up a Session

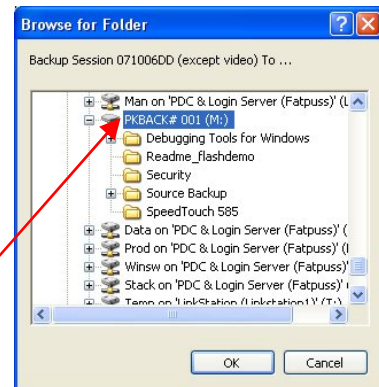


1. Select the **Session** you want to backup in the left-hand tree view pane.

2. Right-click the selected **Session** to display the context menu.

3. Choose the **Backup** option from the context menu.

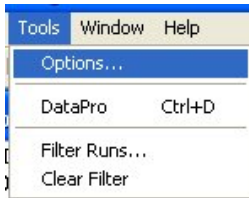
4. Select the location, from the **Browse For Folder** dialog, where you would like the compressed folder to be stored.



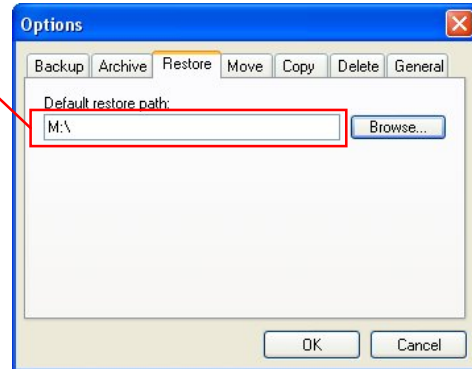
## Data Restore

Data Restore involves the extracting of data from the selected compressed folder to a Data Folder.

### Restore Options



Sets the default path used in the **Browse For Folder** dialog for location of the compressed backup folder.

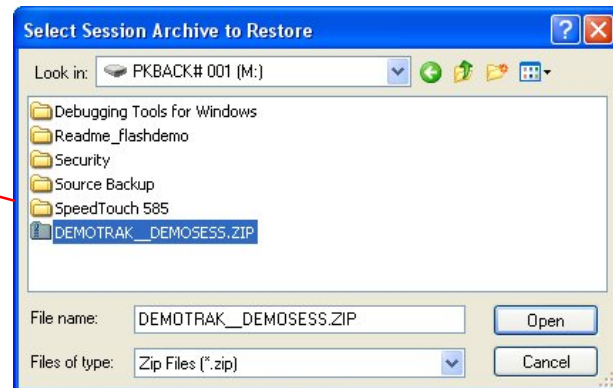


### Restoring a Session



1. Select the **Restore** option on the **File** menu and then the **Session** submenu option.

2. Locate the compressed backup folder you would like to restore. Compressed backup folders are named in the form **TRACK\_\_SESSION.ZIP**



3. Locate the **Data Folder** where you would like the **Session** restored to.



## DataPro Settings Backup

DataPro Settings Backup involves the copying of selected user settings such as Layouts, PIN codes and Designer Configurations to a compressed folder on another drive (usually removable media).

1. Select the **Backup** option on the **File** menu and then the **Setup** submenu option.

2. Select the items you would like to backup.

3. Locate the folder where you would like the compressed backup folder to be stored.

The image illustrates the steps to perform a DataPro Settings Backup. It shows the File menu with the Backup option selected, the Backup Setup dialog box with the following items selected for backup: Vehicle Setups, User-defined Calculations, and Designer System Configurations. The Browse for Folder dialog box shows the destination folder selected: PKBACK# 001 (M:).

## Notes

## Notes



**AUTO METER PRODUCTS, INC**  
**413 West Elm Street**  
**Sycamore**  
**IL 60178**

**Technical Support (Toll Free)**  
**866.248.6357**  
**Technical Support 815.899.0801**  
**Fax 815.895.6786**

**<http://www.autometer.com>**

2650-1403-00