

Auto Meter® DataPro Software Installation and Set-up Guide

Step 1 Software Installation



1. Before you start to install the software, you should save any data and close all **Windows** applications on your computer.

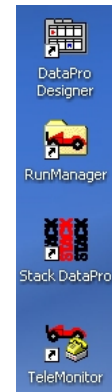
2. Insert the **DataPro** Installation CD into your computer's drive.

3. The InstallShield® wizard should start automatically when the CD is inserted. However, if AutoPlay is disabled, type **D:\setup.exe** in the **Windows Run** dialog (where **D** is your CD drive letter).

Tip: You can launch the **Windows Run** dialog using these keys:-



4. Follow the on screen instructions to install the software.



5. On successful installation of the software, you will see the new program icons installed on your desktop. The **Start** menu also will include options for the software components added by the installation process.

Step 2 Hardware Installation



1. Plug the **CAN-USB Network Interface Module** into an available **USB** socket on your computer. **Windows** will detect that a new device has been connected and will display a message at the **System Tray** to report this.



2. **Windows** will then display the **New Hardware** wizard. Make sure the **Install the software automatically** option is selected, then click the **Next** button to continue the hardware installation.



3. **Windows** will create a new **System Restore** point. Wait while the wizard installs the correct driver for use with the **PCAN-USB Device**.



4. Click the **Finish** button when the **PCAN-USB Device** has been installed as shown by the final dialog in the installation wizard.



5. The **System Tray** shows that the installation process has been completed successfully and the new hardware has been installed.

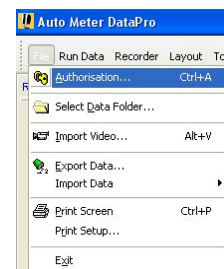
Step 3 PIN code Authorization



1. Locate the PIN code information label which can be found on the front of the **DataPro** Installation CD case.

Note: This information can also be found on the packing list.

2. Double-click the **DataPro** icon on the Desktop to launch the application.



3. Select the **Authorization** option from the File menu.



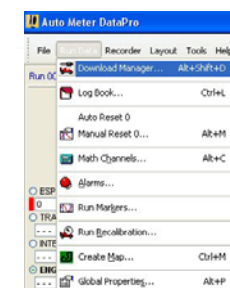
4. Click the **New** button to clear all fields.

5. If your computer is currently connected to the module via the **CAN-USB** network interface and the module is powered on, click the **Get Tag** button. Otherwise, enter the module's Tag number manually.

6. Enter the PIN code exactly as it appears on the case label.

7. Click the **Authorize** button. If the information has been entered correctly, the message **PIN code authorized successfully** is displayed.

Step 4 Module Registration



1. While within the **DataPro** application, select the **Download Manager** option from the **Run Data** menu.



2. Click on the **Add Vehicle** button in the Manager.



3. Enter your chosen name for the module/vehicle in the **Add New Vehicle** dialog that is displayed.

Enter the Tag number for this module, or if the module is powered and connected to your computer, you may select <GET...> from the Tag dropdown list.

4. If you have more than one recorder module, you may repeat this process for each module.

When all vehicles have been added, click the **OK** button to close the **Download Manager**. Click **OK** on the **Add New Vehicle** dialog to save this information.



Now take a look at the **DataPro** Quick Start Guides to get you started using the software!

