

Quick Start Guide - Android

DashLink Gauge System



1

Download and Install the AutoMeter DashLink App from the Google Play Store on your mobile device.



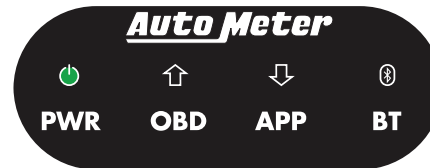
2

Plug the DashLink Dongle into your vehicle's OBD Port. It is typically located on the lower left side of the driver's side foot well.



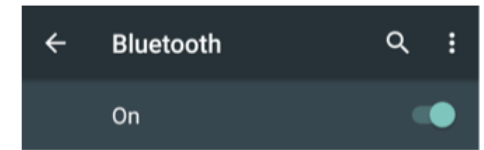
3

Turn vehicle ignition key to On, or Start Engine. You will see the Green PWR turn On.



4

On your mobile device, open the Settings Menu and confirm your Bluetooth is enabled.





Quick Start Guide - Android

DashLink Gauge System



5

Perform a Bluetooth Scan. "AutoMeter DashLink" will appear as an Available Device. Select it and pair your device.

Paired devices

HM3500

Available devices

AutoMeter DashLink

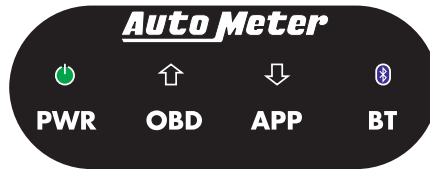
6

Launch the DashLink App and it will automatically detect and connect to the DashLink dongle. If it does not connect, tap the Connect Button.



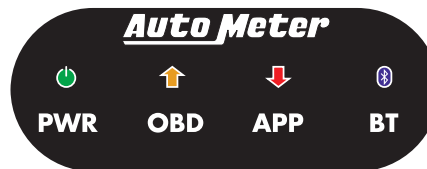
7

Once connected, the Blue Bluetooth Light will be illuminated on the DashLink Dongle and a green ring will appear on the Connect Button on the App.



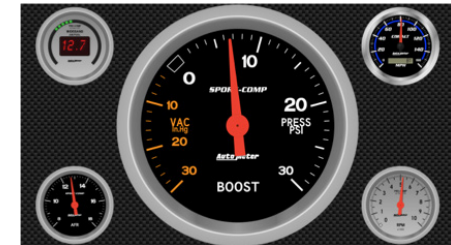
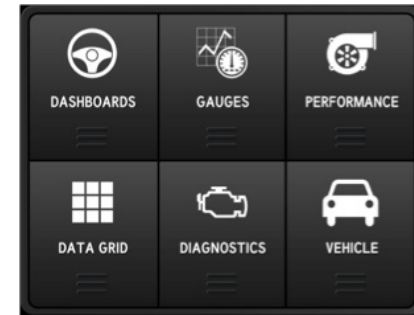
8

The OBD Light and APP Light will both blink, signifying a data link is established between the Dongle and the Mobile Device.



9

Explore the DashLink App for your vehicles performance with AutoMeter Gauges, Performance Dashboards & more.



Go to <http://www.autometer.com/media/manual/2650-1900.pdf> for the Full Owners Manual for the DashLink Gauge System